



Attention Luverne alumni:

Your wisdom, expertise and valued opinions are wanted for Luverne's Commercial Revitalization Project

At a recent community meeting that was gathered to obtain public input, participants identified what they believed to be Luverne's assets and resources.

Among several key areas brought to the table, Luverne High School Alumni were identified as valuable sources of advice, guidance and financial support.

Even though they no longer live in Luverne, many alumni stay closely involved in community development and have a stake in the future growth of their hometown.

The strategic planning process is beginning now and will evolve over the next several months.

Despite the ambiguous discussion, it's not just another year-long study, but rather an intensive effort to translate ideas into a concrete plan.

The hope is that Luverne residents (and Luverne alumni) will decide it's worth their time to be active in this process, and then commit to helping make Luverne a better community.

Following is a recap of the Star Herald coverage of the process so far.

* * *

Sometimes good things happen to small communities by chance, but progressive communities take action to position themselves for success.

Luverne is a good example of both scenarios.

Specifically, the community's

Here's how you can weigh in on the important conversation about the future of your hometown:

Call Scott Marquardt of the SWMIF, 320-583-4629.

**His e-mail address is scottm@swifoundation.org.
Luverne EDA Director Ted LaFrance can be reached at 449-5033 for information, as can
Jane Wildung Lanphere at the Chamber Office, 283-4061.**

role in the world-acclaimed Ken Burns film, "The WAR," provided priceless visibility, which has attracted thousands of interested tourists to Luverne.

Since then, the wheels have been in motion to capitalize on that rare opportunity.

For example, Luverne native Warren Herreid II and his wife, Jeannine Rivet, and their KAHR Foundation have worked with the community to develop the Rock County Courthouse Square.

The Rock County Veterans Memorial and the Veterans Memorial Building are proud symbols of the community's passion for preserving its heritage, one that was strongly influenced by war.

But that's only a small piece of the broader community development effort underway.

Making the most of Luverne's assets

Local leaders have been working with the Herreids, urban planners and investors on a plan to tie all of

Luverne's assets together for future success.

It dates back several years when tentative announcements revealed interest in downtown Luverne as destination for outlet shops.

Its location on Highway 75 and I-90, its distance from anchor stores in Sioux Falls and its unique historic offerings and proximity to the Blue Mounds all pointed to likely success.

Those ideas are now being explored as part of a commercial revitalization that takes into account Luverne's regional assets.

For example, planners are looking at the growth of Sioux Falls and how it will affect Luverne.

A \$110 million casino and recreation center being built just over the border into Iowa will affect the entire region.

And the Hyperion refinery under construction in Elk Point, S.D., is projected to impact on labor markets and economies in the tri-state area.

All these details are part of discussions with urban planners, who indicate that Luverne is at a pivotal point in charting its path for future growth.

Input requested, shared at Nov. 30 meeting

Now developers need community involvement. A key meeting on Nov. 30 drew more than 100 interested participants who shared input on the project.

Scott Marquardt of the Southwest Minnesota Initiative Foundation facilitated the gathering in the Blue

Commercial Revitalization/See p. 4

Honor Roll of *Alumni News* Contributors

Compiled by Rhonna Jarchow

During this past quarter, October 5, 2010, through December 29, 2010, the *Alumni News* received money in the form of memorials and gifts totaling \$4,384.28.

In the memorial section below, the individual being memorialized is printed in bold print, followed by the individual or individuals who made the gift. Contributions given by graduates and friends follow the list of memorials.

Thank you for your support!

Memorials

Robert Engen, '41

Odin Olson, '42

Lloyd Lund, '42

Odin Olson, '42

Elaine Arp Boomgaarden, '43

Eva Lou Beers Aanenson, '43

"Old Kenneth Gang" of 1944-1952

Leo Berning, '47

Carlis Anderson, '47

Gloria Schlapkohl Siekmeier, '50

Anna Niessink Elbers, '49

Darlene Rozeboom Bosch, '49

Harry Hoffman, '50

Gloria Schlapkohl Siekmeier, '50

Richard DeKing, '57

Lorena DeKing Wojahn, '54

Sondra King Soli, '58

Karen Groth Schroepfel, '58

Donna Kallsen Connell, '58

Marcia Roberts Johnston, '58

Jim Godfrey, '63

Keith Brooks, '62

Linda Godfrey, '65

Keith Brooks, '62

Chuck Thompson, '72

Carol Aanenson Hatting, '66

Jim Hatting, '66

Lori Dahlen Carlson, '76

Patricia Teclaw, '76

Stan Arends

Imogene Lemke Krogmann., '47

John Krogmann, '45

Elinor Bagbey

Stan Bagbey, '58

Mary Ann Woodley Hustad, '58

Judy Goembel Larsen, '58

Ruth Ashby

Mary Swenson

Pat Mailander

Greg Burger

LuElla Braa

Lona Gabrielson Klosterbuer, '70

Don Klosterbuer

Merle Cook

Rhonna Jarchow

Bob Jarchow, '67

Lucille Getman

Barbara Golla

Gary Golla, '67

Lona Gabrielson Klosterbuer, '70

Vivian Schumacher

Tuesday Morning Coffee

Carol Smith, Mrs. Dale Smith

Donnalee Boland Gradert, '53

Marv Gradert, '52

Contributions

Class of 1944

Keith Mundahl

Class of 1946

Elzora Wulf Ott

Class of 1952

Marv Gradert

Class of 1953

Donnalee Boland Gradert

Class of 1958

Donna Kallsen Connell

Karen Boysen Boeldt

Class of 1965

Rebecca Burns Schenk

Class of 1973

James Petersen

Friends

Gladys Mann

Alumni News Financial Summary

Previous Balance:

October 5, 2010 \$1,233.15

Expenses for Oct., 2010, issue:

RCO (Labor) \$122.49

Postage 1,918.38

Labels 187.26

Printing 919.07

Postal Returns 200.00

Total Expense (\$3,347.20)

Income - Oct. 6, 2010, through

Dec. 29, 2010 \$4,384.28

Current Balance \$2,270.23

*The cost of the January, 2011, issue is unknown, but the estimated cost is \$3,500.00.

Memorials and contributions may be sent to:

Alumni News

c/o Rhonna Jarchow

709 N. Kniss Avenue

Luverne, Minnesota 56156

NOTE:

If you have recently made a contribution to the *Alumni News* and your name does not appear on this page, please let the staff know. The chances are your contribution was received after this page was compiled (December 30, 2010). Please watch for the next issue, April, 2011 (Volume 21, Issue 3), for additional names of *Alumni News* contributors.

What We've Heard . . .

Leo Berning (LHS 1947) writes from Alexandria, MN that he fondly remembers the “old Kenneth gang” from 1944 to 1952.

Manitowoc, WI resident and LHS alum, **Karen (Boysen) Boeldt** (LHS 1958) sends greetings to her hometown - Luverne! Karen sends her thanks to all of those involved in the Alumni News for doing such a marvelous job and serving all graduates.

Jim Petersen (LHS 1973) of Waconia, MN sends thanks to the Alumni News staff for the great newsletters in 2010. He always looks forward to the latest edition. Jim sends his greetings and blessings to all people who have ever called Luverne “home.”

Pat Teclaw (LHS 1976) adores receiving the updates and news from classmates and friends from throughout the country. Pat also sends Christmas and New Year greetings to all LHS alumni from her home in West Des Moines, IA.

You don't have to have graduated from LHS to be a fan of Alumni News. **Gladys Mann** of Luverne moved here in 1940 to work at the Rock County Bank and has lived here ever since.

Since her children and grandchildren have graduated from LHS she has become a big fan! Gladys enjoys keeping track of the many friends and family through Alumni News.

Leonardtown, MD is the home of **Shelly (Hall) Estacion** (LHS 1987.) Shelly recently released a music CD album called “The Journey.” She sends greetings to her Luverne alums and encourages you to check out the 12 original piano/instrumental songs from the album on Itunes. Shelly's website is www.cdbaby.com/cd/ShellyEstacion. Enjoy!

Odin Olson (LHS 1942) sends greetings from his new home in Minnetonka, MN. He also writes that receiving Alumni News is a “day booster” that can help make any overcast day bright! Odin thanks all the staff at Alumni News for the great job they do!

Elizabeth (Hinkly) Kaiser (LHS 1931) writes from her home in Hopkins, MN with recollections from the pictures in the July issue:

Dear Alumni Friends,
I was delighted to receive the July Alumni News recently with two of the three schools I attended in Luverne shown on the covers.

Before I read the article I noted that the church building in the background was the south side view of the St. Catherine's Catholic Church. The front entrance faced Cedar Street. The church was built in 1908. I was baptized there in August, 1913. I attended that church until I

left Luverne in the summer of 1931.

I would also like to correct the location of the school that was given. The front of the school faced south on Luverne Street. Cedar Street was on the east side and Freeman Avenue was on the west side.

The school was frequently referred to as the Old Central School. I always thought that was because it was located in the center of the block and the center of Luverne at that time.

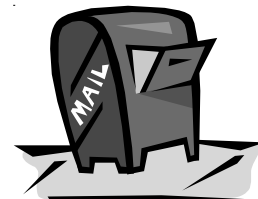
My parents and I moved into my grandparents' home located at 217 North Freeman Avenue when I was four years old. It is now known as the Hinkly House Museum. The house was kitty corner to the school.

My father, Stanton Hinkly, started first grade in that school. His first grade teacher was Miss Mary Jones. When I started school there in 1919, Miss Jones was also my teacher in the

What We've Heard/See page 4

Let's Hear from YOU!

Let us know what you are doing and we'll pass it on to other alumni. Complete and then place this form in an envelope and mail to:



Alumni News
709 N. Kniss Avenue
Luverne, Minnesota 56156

Name _____

Mailing Address _____

City _____ State _____ Zip _____

Phone Number: _____

E-Mail _____

Year of Graduation _____

Comments: _____

Check here if you wish to have your e-mail address included in the directory.

What we've heard/ Continued from page 3

same room! Her assistant was Miss Avis Hazleton.

The first escape was a large circular chute on the outside wall of the east side of the school. Our playground equipment consisted of a slide geared for primary students and a higher one for older children, swings, teeter-totters, and a self propelled "merry go round."

I remember my class standing on the front steps of the school in fourth or fifth grade waiting to see an eclipse of the sun. We were holding smoked glass in our hands to protect our eyes when it occurred. The other students were on the ground in front of us.

At the close of the school year in the Spring of 1924 the old school building was demolished. All grades were moved into the old red quartzite stone school a few blocks to the west on Luverne Street and Highway 75. I was in the sixth grade that uneventful school year.

What a joy it was to move into the newly completed Junior/Senior High in the fall of 1925 as a seventh grader! It was absolutely wonderful to have a state of the art gymnasium, a large lovely auditorium, a terrific library, study hall, and lockers! We were so proud of it.

I graduated in the Class of 1931. To this day I believe I received an excellent education for that period of time. We were told during those years that Minnesota schools ranked second in the country with California ranking first.

Those are my musings and thoughts of yesteryear! My greetings to all LHS alumni!

Marv (LHS 1952) and Donna Lee (Boland)(LHS 1953) Gradert of Terre Haute, IN looked forward to the celebration of the 60th Tri-State Band Festival. The Graderts send congratulations to the Luverne community for their work in making Tri-State the most prestigious high school marching event in the Midwest!

Commercial Revitalization/ Continued from page 1

Mound Banquet Center.

"It's critical that all voices are heard," said Scott Marquardt of the Southwest Initiative Foundation.

"I want people to be talking about this, to listen and to participate. ... This will be successful only if the community engages in the process."

Luverne Economic Development Authority Director Ted LaFrance agreed that the meeting was a key turning point.

"We need full community support behind this," LaFrance said. "All sectors of our local economy need to be involved in order to make positive progress."

Architect Michael Schroeder has been hired to steer that effort.

Schroeder is an urban designer and planner with LHB Inc., Minneapolis, and said his approach to community development is to involve as many people as possible.

Schroeder led the Nov. 30 exercises, which were designed to encourage brainstorming and sharing ideas about Luverne's current resources and challenges.

"There's a lot of energy here, and we're going to take advantage of that in a relatively short time," he said.

Among the dozens of small groups who worked on the exercises, there were hundreds of ideas and points raised, but a few common themes emerged.

Among them was the consensus that Luverne residents have a great deal of pride in their community and there is a great deal of commitment to steering their community toward success.

The idea now, Schroeder said, will be to use Tuesday's information to focus on priorities and chart a path to reaching Luverne's commercial goals.

"I was impressed by the number of people who showed up. ... There's a tremendous amount of optimism among you," Schroeder said. "We've had similar meetings in much larger towns where they have trouble getting 30 people to show up. Here, we had 100 people show up, and everyone had ideas that they wanted to share."

A three- to four-day workshop is planned for January when ideas and information will be shared in a condensed, useable format.

"We want a strategic vision, not just more ideas," Schroeder said.

Until then, Marquardt said Luverne residents are encouraged to remain part of the discussion.

"People are starting to get their hands around it, and it's gaining some structure," Marquardt said.

"It's been an exciting challenge all along, but as this falls into place, I'm becoming more excited with every conversation signaling success."

A local steering committee has been working on gathering public input to this point.

The committee includes a mix of representatives from private business, city and county government, agriculture and other sectors.

Members are LaFrance, Bill Weber, Greg Burger, Gary and Janine Papik, Jane Wildung Lanphere, Tammy Makram, John Call, Kyle Oldre, Brenda Winter, Marilyn Bloemendaal and John Aanenson.

A Facebook page, "Luverne Commercial Revitalization," already has dozens of fans and offers regular updates on the process.

"This is an open and transparent process," he said, sharing his phone number, 320-583-4629. "Please call me any time with an idea you'd like to share or if you have questions and comments."

His e-mail address is scottm@swifoundation.org.

LaFrance can be reached at 449-5033 for information, as can Lanphere at the Chamber Office, 283-4061.

Luverne High School graduate begins legislative duties in Minnesota State Capitol

Luverne High School 2004 graduate **Joe Schomacker** is finding his way around the Minnesota State Capitol and learning the ins and outs of legislative policy and procedure.

He was sworn in earlier this month in the House of Representatives — he serves the southwest Minnesota District 22A, which includes Luverne and Rock County.

Schomacker, son of Randy (Class of 1984) and Sharon (Buss, Class of 1982) Schomacker, was elected on the Republican ticket last fall.

For that election process he answered the following questions for Star Herald readers:

Education:

Luverne High School; Bachelor of Art in public administration, speech communication, and political science from Southwest Minnesota State University, Master of Professional Studies in strategic public relations from The George Washington University.

Occupation: Self-employed business consultant and active in two family businesses, Curves of Luverne and Schomacker Office Cleaning.

Why are you seeking election/re-election?

I want to be your next state representative to work for a better future for Southwest Minnesota.

As a third-generation resident my roots run deep and I am proud to call Rock County home. This area and its people have molded my values and helped form my principles of faith in God, family, hard work, and caring for one another.

These are important to me and are why I love Southwest Minnesota. Beyond this, I have an economic interest in seeing our area prosper — my own business and my family's businesses.

What politicians are doing to our state and country today must stop.

We need to move in a direction that grows our



economy, creates jobs, and provides solutions instead of empty political rhetoric.

As a younger person, I know how much we need to attract more young people to move here, to start businesses here, and raise their families and live their lives here. I know it is a big job, and one that won't be fixed overnight.

We need a fresh face and a new voice in St. Paul who understands that.

Education funding continues to be a challenge for rural Minnesota school districts. What specific action do you believe is needed to adequately fund our schools?

This year, a student in Minneapolis is valued at \$13,951 in state funding. That same student in Luverne is only "worth" \$8,799, and at HBC, \$8,484. Does this make

sense to anyone besides Twin Cities politicians?

As a volunteer speech coach for Luverne High School, I work with students with terrific potential. We need to be investing in their future by continually working toward a fairer funding system.

It won't happen immediately, it'll take time. It also takes a serious and concerted effort.

A balanced funding formula helps landowners, too, as property taxes take much of the undue burden in the current formula.

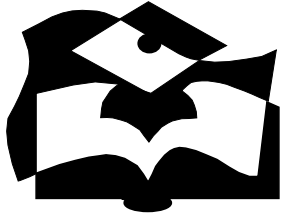
The next step is to sit down with parents, teachers, students, and administrators to learn more about what the state can do to reduce unfunded mandates in the schools. Local control of our schools is necessary. Having St. Paul micro-manage our schools is about as effective as having them create a fair funding formula.

Most importantly, however, is the need to improve our jobs climate so our young people can return home after their education to find good jobs. We can do this and I know first hand the joys of doing it.

New Scholarships Established With Local Organization

by Gregg Gropel

The local scholarship organization, known as Luverne Dollars for Scholars, was very fortunate to receive gifts from several sources over the past three months. Of these gifts, three were gifted for the purpose of establishing new perpetual scholarships. These endowments came from Jim and Judy Herman, and the estates of Carlis M. Anderson and Lawrence and Millicent Marsden. These new scholarships



were given the following titles: *Fred and Evelyn Herman Memorial Scholarship, Carlis M. Anderson Music Education Scholarship, and Lawrence and Millicent Marsden Memorial Scholarship.*

Fred and Evelyn Herman Memorial Scholarship

In honor of Jim Herman's parents—Fred and Evelyn Herman—in late October Jim and Judy Herman established the Fred and Evelyn Herman Memorial Scholarship with the local scholarship organization.

Jim's parents, Fred and Evelyn, were the first generation owners of Luverne's longtime automobile business, Herman Motor.

Fred, born in Minnesota in 1902, entered Luverne in the late 1920's. Eventually, Fred made the acquaintance of and married Evelyn Ingelson, a resident of rural Springwater Township (Rock County).

It was not until 1932 when Fred and Evelyn purchased the Ford dealership in Luverne. Despite having only an eighth grade education, Fred conducted a very profitable, service oriented business. It was a business Fred operated until his death in 1989. After his death, the business was conducted by his sons. Now, the business is currently operated by the third Herman generation, Joel Herman, Fred's grandson.

Jim says his parents knew the importance of both education and church. Fred became involved in the local education system, serving many years on the Luverne School Board. His parents also saw to it that their children obtained a college education. In addition to their involvement in education, Fred and Evelyn were members of and very active in St. John's Lutheran Church.

Fred and Evelyn's children are the late Caroline Henrikson, James "Jim" Herman, Rosemary Merkel, and Richard "Dick" Herman. Each graduated from Luverne High School. Caroline graduated in 1948, Jim in 1951, Rosemary in 1954, and Richard, the youngest child, is a 1961 grad.

The first Fred and Evelyn Herman Memorial Scholarship will be awarded in May, 2011.

Carlis M. Anderson Music Education Scholarship

The second scholarship was initiated posthumously by Carlis M. Anderson, a 1947 LHS graduate.

During one of the past All-School Reunions, Carlis stated that she would establish a scholarship with Luverne Dollars for Scholars, but, as she said, "You won't get it

until after my death."

Carlis M. Anderson passed away Thursday, January 28, 2010, at Sauer Memorial Home in Winona, Minnesota, after complications resulting from idiopathic pulmonary fibrosis. In November, 2010, the Carlis M. Anderson estate fulfilled Carlis' request by establishing the Carlis M. Anderson Music Education Scholarship.

Carlis was born in Luverne, Minnesota, on January 8, 1929. She was raised by her parents Carl and Agnes Anderson along with a brother, Alan, and sister, Marguerite (Patty) in Luverne. The Anderson family was blessed with the gift of music.

Carlis spent her lifetime pursuing her love of learning and teaching music. Carlis earned degrees in music from the University of South Dakota and the University of Colorado, along with post graduate studies at Northwestern, Michigan, and Wisconsin.

She spent a few years teaching music overseas and in the states before settling in at Winona State University, Winona, Minnesota.

Carlis retired from Winona State University after 28 years with the music department and the Phelps Lab School, receiving the title of Professor Emeritus from the Minnesota State University Board.

She will be best remembered by her years of service to others.

The first scholarship will be awarded in May, 2011.

Lawrence and Millicent Marsden Memorial Scholarship

Similar to Carlis Anderson's pledge, Lawrence Marsden, a 1937 LHS graduate, wrote a letter to Luverne Dollars for Scholars in the late 1990's. In his letter, Lawrence wrote that at his death he would be leaving \$50,000 to the local scholarship program.

Lawrence passed away in 2005 and his wife, Millicent, in July, 2010. In December, 2010, the Marsden estate issued a check to the local scholarship program, and the Lawrence and Millicent Marsden Memorial Scholarship was created in their memory.

Lawrence and Millicent Snyder Marsden, graduates of Luverne High School and Jackson High School, respectively, ended up residing in High Point, North Carolina, shortly after the second World War.

In High Point, Lawrence became involved in the fabrics industry and eventually became a very successful proprietor of his own textile business.

Millicent, who graduated summa cum laude from the University of Minnesota with a business degree, utilized her business savvy by helping her husband in his textile firm.

Lawrence's father died before Lawrence turned one. His mother, Carrie Marsden, was a member of the Luverne school faculty in the early to mid-1900's. Millicent's father, Stewart Snyder, was a dentist in the Jackson community.

The first Marsden scholarship will be awarded in May, 2011.

Go Green!!!

Online Alumni News goes green, saves green

Have you checked out the
Luverne Alumni News at
www.alumninews.info lately?

A new update is here:
You are able to read your
Alumni News online.

Now that it is available, let
us know you would like to
discontinue the hard copy
to go green (save postal
expenses and a tree).

Please email
Patti Pierson at
piersonprp@frontiernet.net

PARENTS:
Have your children moved
out of the house
and their Alumni News
comes to your address?

PLEASE email Patti Pierson
piersonprp@frontiernet.net
or call her at 507-669-2371
to update their information.
Thank you



Hardwick All-School Reunion

June 24-25-26, 2011

It's been 19 years since we gathered to renew friendships, laugh (and sometimes cry) together as we share memories of those good old days at Hardwick Grade School. Spread the word. Tell your friends and family and plan on having a good time! We have a lot of fun things planned, of course reminiscing with old classmates will be the highlight. Who will have the most outrageous story?

We will again be sharing the events with Hardwick Jubilee Days. The Hardwick All School Reunion Committee encourages individual classes or your family to organize and make a float to enter in the parade.

If you have stories or old (or new) pictures you'd like to share on our "Hardwick Wall of Fame email to one of the Hardwick All School Reunion Committee.

Be sure and check out Facebook . . . Hardwick Memories. You can add pictures or stories to share with other Hardwick Alumni. **(SEE PAGES 8 AND 9 FOR REGISTRATION)**

Make plans now so you don't miss the opportunity to reminisce with old classmates and if you are unable to attend send your updates on what you or your siblings have been up to since your days in Hardwick to any of the committee members listed below.

Hardwick All School Reunion Planning Committee

Lorna Siebenahler Bryan - lorna@frontiernet.net
Joni Petersen - jonipete@iw.net
Patti Kirby Pierson - piersonprp@frontiernet.net
Arlen Hansen - ahansen@usgs.gov
Dianne Lorenzen Ossenfort - rdossen@mchsi.com
Bryan Fodness - bfodness@frontier.com
Kathy Behr Remme - kremme@iw.net
Bill DeBates - wmdebates@knology.net
Colleen Obermoller Deutsch - cdeutsch@myclearwave.net

HARDWICK ALL SCHOOL REUNION/JUBILEE DAYS

Schedule of Events

(Tentative schedule as of January 4, 2011)

Friday, June 24

- “Wildcat Headquarters” Open from 3 to 8 pm – City Hall
 - Pick up your All School Reunion packet (prepaid meal ticket, name tag, complete schedule of events)
 - Selling All School Reunion t-shirts, sweatshirts, hoodies and caps
 - Display of “Hardwick Grade School” pictures
- 8 Team Co-ed Softball Tourney – 6:00 pm. Contact those old teammates or friends to form a team. Preregister your team with Crystal Swenson 507-669-2009
- Hardwick Fast Pitch Softball Game – 8 pm
- Karaoke on Main Street – 8 pm Tune up your voice and share your favorite “grade school” song. Come and hear your friends.
- Wildcat Burger Special from 5 to 8 pm – Green Lantern Cafe

Saturday, June 25

- “Wildcat Headquarters” Open at 9 am – City Hall
- Join us for a very casual and exciting 9 holes of Pasture Golf – starting at 10 am. A small entry fee will be charged to cover expenses and prizes will be awarded.
- All School Reunion Ag Olympics – starting at 3:00 pm Requires no special skills and is fun for all ages.
- Inflatables for kids - Main Street
- Bean Bag Tourney – Starting at 1:00 pm. Cost \$5.00 per team (limit to 16 teams)
- Co-ed Softball Tourney – starting at 8 am
- All School Reunion & Community Pork Loin Meal/Ribfest – serving starts at 5:00 pm – catered by the Green Lantern Cafe (under the tent across from the fire hall)
- All School Reunion Program - 6:00 pm (under the tent)
- Jubilee Days/All School Reunion Parade – 7:00 pm
- Pedal Pull (ages 4-11) – after the parade on Main Street
- Street Dance “Reprise” playing 60’s to present music – 9 pm - Sponsored by Green Lantern Bar

Sunday, June 26

- Community Outdoor Worship Service with Pastor Mumme -10:30 am. with Lunch following Worship – Zion Lutheran Church
- Co-ed Softball Tourney starting at 1 pm

REGISTRATION FORM

Hardwick All School Reunion June 24-25-26, 2011

Please complete and return the registration form with your check by April 15th. Tickets for the meal, t-shirts, sweatshirts and caps may be picked up at the "Wildcat Headquarters" in the Hardwick City Hall on June 24-25th.

ALUMNUS (First Name, Maiden Name, Last Name)

_____ HGS Class of _____

SPOUSE _____ HGS Class of _____

ADDRESS _____

CITY _____ STATE _____ ZIP _____

TELEPHONE _____ CELL PHONE _____

E-MAIL ADDRESS _____

_____	Number Attending. Registration and Saturday Meal Ticket @ \$15 per person	\$ _____
_____	Total Number of HGS T-Shirts @ \$12 each	\$ _____
_____	Total Number of HGS Crew Sweatshirts @ \$20 each	\$ _____
_____	Total Number of HGS Hoodies @ \$27 each	\$ _____
	(XXL and XXXL T-shirts & Sweatshirts are \$2.00 extra)	\$ _____
_____	Total Number of HGS Caps @ \$10 each	\$ _____
	Add \$5.00 if you would like your order shipped	\$ _____

Any Donations are appreciated . In Memory of _____ \$ _____

(Registration fee for the Hardwick All School Reunion is to help defray the costs of mailings, entertainment, rental of tent & picnic tables, and other costs related to setting up and running the reunion).

Total Amount Submitted \$ _____

<u>HGS T-Shirt</u>	<u>Color</u>	<u>HGS Sweatshirt or Hoodie (circle one)</u>	<u>Color</u>
_____ Small	_____ Maroon _____ Gold	_____ Small	_____ Maroon _____ Gold
_____ Medium	_____ Maroon _____ Gold	_____ Medium	_____ Maroon _____ Gold
_____ Large	_____ Maroon _____ Gold	_____ Large	_____ Maroon _____ Gold
_____ XL	_____ Maroon _____ Gold	_____ XL	_____ Maroon _____ Gold
_____ XXL	_____ Maroon _____ Gold	_____ XXL	_____ Maroon _____ Gold
_____ XXXL	_____ Maroon _____ Gold	_____ XXXL	_____ Maroon _____ Gold

(T-shirts, Sweatshirts and Hoodies in men's sizes)

HGS Cap Color _____ Maroon _____ Gold

Please mail registration form to:

Patti Kirby Pierson
1562 201st St.
Hardwick, MN 56134

Make check payable to:
Hardwick All School Reunion



What should be the role of the Minnesota Legislature in supporting health care reform?

With 60 percent of Minnesotans insured through their employer, getting our economy back on track is the first step in health care reform. We need affordable and accessible health care in Minnesota, and must allow individuals the right to choose their own health care.

We must look toward options such as medical lawsuit abuse reform and encouraging more competition for insurance companies. Without competition in the market, we all lose the freedom to choose affordable health care that best fits our lives. Cutting red tape and foolish regulations while providing a strong patient-doctor relationship is the answer.

Working for years in admissions for the hospital in Luverne, I saw firsthand the importance of quality health care. I earned the endorsement of Minnesota's doctors and support of Minnesota's hospitals for my willingness to have an open mind in discussing health care.

We must work with all sides to assure affordable, quality health care in the future. Political dealings behind closed doors are the work of old-time politicians and are wrong.

We can solve our problems within a budget we can afford. Spending that grows faster than inflation is unsustainable. Allowing even a portion of our taxpayer dollars to be spent by an auto-pilot increase to the budget doesn't allow for accountability.

What should be the role of the Minnesota Legislature in supporting renewable fuels?

Farmers prove that allowing free enterprise to work promotes prosperity at the lowest cost to the consumer. We have the world's most affordable food, thanks to efficient farmers, not some government master plan. Renewable fuels provide us with the greatest opportunity to grow our local economy and create jobs.

While we promote biofuels and ethanol, we must work with all our farmers to assure all facets — grain farmers and livestock

producers — can prosper.

Adding value locally to our agricultural production is the secret to a vibrant local economy with good jobs for everyone.

Keeping taxes low and regulation reasonable are keys to seeing growth in this basic industry. We need the jobs and increased tax base.

We also need to ensure that our agricultural community is not regulated out of the market.

Renewable fuels are good for clean water and clean air, and actions like the federal cap and trade punishes these efforts.

At the State level, the Minnesota Pollution Control must allow our farmers to produce and apply only needed regulations. Liberals in St. Paul and Washington kill agriculture as we know it by adopting cap and trade laws passed by the U.S. House. I oppose this type of nonsense.

What do you believe to be the biggest challenge facing rural Minnesota today? If elected, what would be your approach to that challenge?

The biggest challenge facing rural Minnesota is two-fold — unsustainable government spending

and our weak economy.

For the last two years, the state of Minnesota operated with about \$30 billion.

However, for the next two years, some say the state "requires" about \$39 billion. This comes from automatic increases to the budget, and it's unsustainable. Do we really want our government to double in size every six years?

We must prioritize our spending and evaluate wants against needs. Did politicians make the right decision when they chose to spend \$11 million on gorilla cages for the Minnesota Zoo while cutting our already strapped nursing homes?

If we expect to allow the government to grow on all of the auto-pilot increases, we're going to have to raise taxes.

A tax increase right now will kill the potential for job growth. In our rural area, we compete with South Dakota and Iowa for jobs.

We have an educated and strong work force to get back to work. It won't happen unless business owners know they won't be penalized with higher taxes.

Help!

We need funds to send the Alumni News.

Contributions can be sent to
Alumni News
C/O Rhonna Jarchow
709 N. Kniss
Luverne, MN 56156

Also, when our alumni send money, it saves time for our volunteers when those contributions are accompanied by the sender's graduation year and maiden names.



Connie Connell is Friend of Education; Greg Antoine named Teacher of the Year during American Education Week celebration

By Lori Ehde

Luverne High School teacher and coach Greg Antoine is the 2011 Teacher of the Year, and local volunteer Connie Connell is the new Friend of Education.

The two were honored during an ice cream social celebration November 15 in the Luverne Elementary commons.

The annual event is the kickoff to American Education Week, which is this week.

Former Luverne Elementary Teacher Rhonna Jarchow was invited to speak at the reception.

She read the Dr. Seuss book, "Hooray for Diffendoofer Day," substituting Luverne community names and local teachers and staff in the story.

Jeanne Bowron, 2008 Teacher of the Year, introduced the 2010 Teacher of the Year and Friend of Education.

Friend of Education

Connell has been instrumental in starting several programs at Luverne Public Schools, and most of her efforts have been behind the scenes.

When she accepted her award at the podium, she said, "I really do like to be behind the scenes, not here."

She recalled the Bookin' Buddies program starting 10 years ago. "Ben Nath was my very first Bookin' Buddy," she said.

And she said the Child Guide program is now eight years old.

Connell worked to get both of those programs started in Luverne, and they are among many reasons she was nominated for Friend of Education.

Her other contributions to education include:

- Helping with the Peer Helper program and attending camps with them,
- Working on the ground floor to raise money for the Blue Mound Ice Arena, which has served students in multiple activities,
- Working to raise money for Palace Theatre preservation and continuing to volunteer at the place where students enjoy movies and plays,
- Serving as a liaison between the school and community to connect students with resources.

In addition to the Child Guide program, Connell's connections between school and community include her service on the Board of Directors for the Southwest Minnesota Initiative.

Through the Initiative, she was able to secure matching funds for the Child Guide program to help sustain it.

Connell said she admires the teachers and staff in Luverne. "Thank you for your hard work and for this honor," she said.

Teacher of the Year

Antoine received numerous nominations for Teacher of the Year from his peers. The accolades were

Remembering our Classmates

Floyd Goembel'38 died Oct 10, 2010 in Luverne.

On March 12, 1938 he married Fern Wiegel at her parent's home in Magnolia. He and Fern traveled in a camper throughout Illinois and Iowa wherever work could be found. In 1942 he was drafted into the Army. Her served in the Pacific Theater as a Harbor Master in the Philippines. In 1945 he was honorably discharged. He and his wife enjoyed traveling with their camper and wintering in Texas. He also enjoyed fishing, bow hunting and photography. Mr. Goembel is survived by three sons, Randall, Mark (Carolyn) and Gary Goembel, one grandson; one great-grandson; a brother Leon Goembel and a brother-in-law Joseph (Helen) Wiegel.

Jack Davis'39 died October 5, 2010 in Sibley, Iowa. He married Violet Wulf in 1941. They moved to Sibley in 1951 where they owned and operated Sibley Cleaners for many years. After selling the business, he served as the Osceola County Auditor for ten years. He volunteered at the Human Services office in Sibley and served as treasurer of the Boy Scouts for 25 years. He was an avid reader, enjoyed golfing, playing cards, dancing and was a die-hard Twins and Vikings fan. He is survived by two children, Debra (Tom) Stewart and Judd (Bridget) Davis, five grandchildren, two great-grandchildren, two brothers **Robert** and **Gordon**, nieces and nephews and many other friends and relatives.

Dorothy Koehn Stager'39, Pipestone, died November 16, 2010 in Rochester, MN. She attended Minneapolis Business College graduating in 1942. In 1949 she married Jerry Stager. She was the bookkeeper at Joe H. Stager and Son, a general contracting business her husband owned with his father. In the early 60s, Mrs. Stager started her career as a comedienne, which developed into her character Granny That Funny Old Lady. She and her husband traveled across country for her performances. Mrs. Stager is survived by three daughters, Sally (Michael) Ebnet, June Stager Farwick, and Meredith (John) Stager.

Johnnie Johnson'39 Following his education, Johnnie enlisted in the U.S. Navy where he served his nation honorably in WWII. After his discharge from the service he married Rosa Tofteland. The couple made their home in Luverne. Johnnie worked for International Harvester until his retirement. He was active in his church, a long time member of the VFW, a member of the Maplewood Cemetery Association, and was a member of the "Last Man Club". One of Johnnie's favorite hobbies was woodcarving. He made many carvings for family and friends. He was also a fisherman and enjoyed time on the water. Above all, Johnnie was a family man. He had a great love for his wife of 64 years, Rosa, his children, grandchildren, and great-grandchildren. He is survived by his wife, Rosa; his children **Dennis '67**, (Sandi) Johnson, **James'71** (Mary Beth) Johnson and **Barbara'73** (Carson) Stensland; six grandchildren, twelve great-grandchildren; and two brothers, Olaf Johnson, and Lloyd Johnson.

1940-1949

Christine Ronlund Marks'43 died October 20, 2010 in Brainerd, MN. After graduation she attended Worthington Junior College. She worked as a fashion model before teaching copy writing at Fort Lauderdale School of Art for 20 years. She was a member of the BSF Bible Study group, a book club and a patron of the library. Her brother survives her, John (Linda) Ronlund four step children; four nieces and nephews; and six great-nieces and nephews.

Aagot Kvaas Oldre '47 died July 2, 2010 at the Tuff Memorial Home. Aagot worked for Tri-State Insurance Company in Luverne after graduation. In 1950 she married Vernon "Doc" Oldre. The couple moved to Alabama where her husband was stationed while serving in the National Guard. In 1953 they returned to Kenneth and farmed. In 1960 the family moved to a farm south of Luverne. After her husband died in 2005, she moved to Luverne. She enjoyed reading, sewing, quilting, making greeting cards, playing cards and bowling. She is survived by four children, **Gale'69** (Laura) Oldre, **Barb Oldre '71**, **Sharan** (Gary) Honermann and **Bryce '77 "Doc"** (Ellie) Oldre.

Anna Niessink Elbers'49 died November 17, 2010 in Luverne. She married George Elbers in 1950. Following their marriage the couple lived in Steen, MN. After her husband death in 1983 Anna worked as a nurses aide at the Tuff Memorial Home in Hills from September 1985 until Nov 1998. She then was employed at the Luverne Style Shop until 2007. She enjoyed reading, traveling, and playing cards with friends and was an avid Minnesota Twins fan. Mrs. Elbers is survived by seven children, Glenda (Jim) Consoer, Marlin (Linda) Elbers, Randal (Shawn) Elbers Rhonda (Larry) Smith, Michael (Barb) Elbers and Shelly Elbers; 19 grandchildren; 13 great-grandchildren, two brothers and six brothers-in-law and sisters-in-law and many relatives and friends.

1950-1950

Sondra King Soli '58 died at her home in Coon Rapids, MN on September 18, 2010 after a brief courageous battle with cancer. Those whose lives she touched will miss her. She met the love of her life, Robert, 50 years ago at the Swain Cross-Country Invitational in Duluth, MN. Sondra was a long time employee of North Memorial Hospital. She will be remembered for her love of travel, golf, wine, and spending time with family and friends. She is survived by her husband of 49 years Robert, father Lloyd King, brother Robert (Diane) King; daughter Teresa Dillenburg (Greg) sons, Chris (Cheryl) and Patrick (Sara); seven grandchildren, brother-in-law Edwin Soli (Patricia); nieces and nephews and other family and friends. "You will not see me, so you must have faith. I wait for the time when we can soar together again, both aware of each other. Until then, live your life to its fullest and when you need me, just whisper my name in your heart." ... I will be there." Emily Dickinson



Lowhead dam removed at Luverne City Park

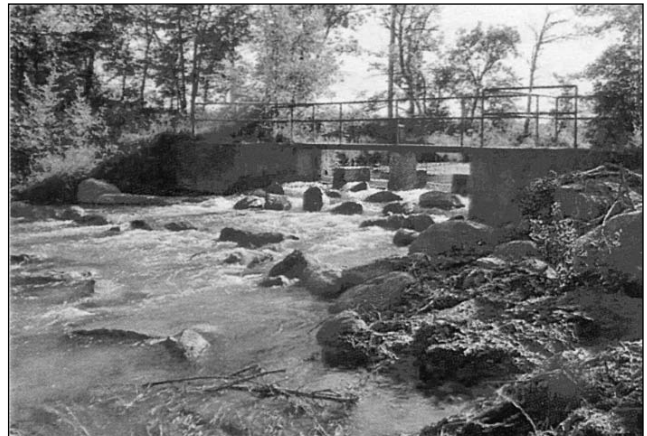
There was a flurry of activity on the Rock River near Luverne City Park this month as workers in heavy equipment took out the final chunks of concrete that was once the lowhead dam.

The dam is being replaced by a series of rock weirs that will slow the water flow to the same extent that the dam did. Concrete on the west side of the river was removed Monday, and most of the other half was removed Tuesday. The east side landing and railing will reportedly remain in place to accommodate fisherman and other recreational river visitors. The old 1939 dam was no longer generating power and posed hazards to both humans and fish.

The project is being funded through state and federal grants.



Often called a “drowning machine,” the design of lowhead dams was lethal to swimmers who fell in near the churning base. Luverne High School student Jesse Saum, 15, perished in the dam in 1993.



This is an example of what the Rock River in Luverne will look when the project is complete.

Teacher of Year, Friend of Ed/ From page 11

directed at both his teaching and coaching abilities.

“Greg has a real passion for teaching. He loves what he does and it shows,” wrote one colleague.

Antoine has been teaching (science, biology and chemistry) and coaching in Luverne for more than 20 years. He’s gained recent attention for turning the tennis program around and lobbying to get new tennis courts built at the school.

His peers say he’s as good with athletes as he is with students.

“I’ve seen Greg’s teaching on the tennis courts for the last few summers. He exemplifies everything a good teacher should do,” one person wrote. “He praises the kids often and truly enjoys having fun with them.”

Another wrote, “Greg is a great teacher. He is patient and kind in his interactions with students, parents and staff. He is also a good coach. He worked tirelessly to improve our tennis courts.”

Others talked about Antoine’s roles on the Luverne Education Association, serving through the years as LEA president, staff development chair, union representative and negotiator. “Greg approaches ‘hot’ issues with a voice of reason,” one colleague wrote.

“He makes everyone stop and think before reacting. He will ask, ‘Do you have a better solution?’ Greg looks for the positive in everyone— be it student or staff.”

Antoine said he was honored to receive the Teacher of the Year award.

“I’ve watched many, many teachers before me get this award, and I’m still not sure how to feel about,” Antoine said.

“I feel it’s hard to pick out one person for the honor, and I wish we could all get this award every year.”

The past five teachers honored with the award include Angela Ahrendt last year, Mike Wenninger in 2009, Jeanne Bowron in 2008, Mary Goheen in 2007 and Kim Schmidt in 2006.



Craig Nelson named ‘Coach of the Year’

By John Rittenhouse

Luverne High School track and field coach Craig Nelson drew an impressive honor.

The veteran LHS mentor received notice that he was named the 2010 Minnesota State Class A Girls’ Track and Field Coach of the Year.

The honor comes from the Minnesota Track and Field Coaches Association, which bestows the award to four coaches (Class A girls, Class A boys, Class AA girls and Class AA boys) within the Minnesota borders on a yearly basis.

Nelson was named the state’s Class A boys’ coach of the year in 2005 and 2006, but this is the first time he’s been tabbed as the Class A Girls’ Coach of the Year.

“I give the credit for receiving this award to the kids and my assistant coaches,” Nelson said.

“I get the recognition, but I’ve never run in a race. It’s the kids who do the running, jumping and throwing.”

He also shared credit with his assistant coaches.

“Al Stoakes, Gordie Hansen and Pete Janiszski do a great job for our program,” he said. “This really is a team award, and they are a big part of our team.”

The LHS coaching staff did put together a team worthy of being honored last spring.

The Cardinals won the Class A state titles in true team competition and at the Minnesota State High School League state meet in 2010.

Nelson receives his award at the MTFCA’s annual banquet in Bloomington Friday, Jan. 28.

The ceremony is staged at the Bloomington Sheraton Convention Center.

Reunions in the Making

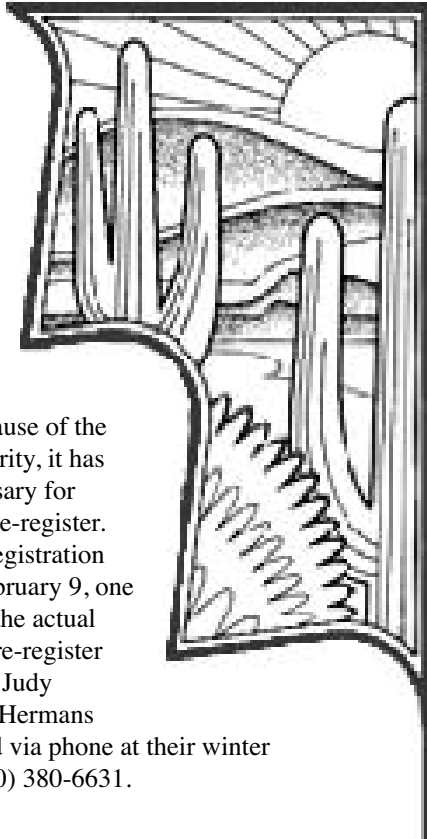
Compiled by Gregg Gropel

Arizona Reunion

The Arizona Winter Reunion is scheduled for February 16, 2011. The reunion will be held at Superstition Springs Golf Course in Mesa,

Arizona. Because of the event's popularity, it has become necessary for attendees to pre-register.

The pre-registration deadline is February 9, one week prior to the actual reunion. To pre-register contact Jim or Judy Herman. The Hermans can be reached via phone at their winter residence, (480) 380-6631.



2011
Arizona Reunion
in Mesa

February 2011

S	M	T	W	T	F	S
		1	2	3	4	5
6	7	8	9	10	11	12
13	14	15	16	17	18	19
20	21	22	23	24	25	26
27	28					

**Planning a reunion?
Let us know. The staff is eager
to announce each and every class
reunion.**

Class of '61

When: Sept. 23 & 24, 2011

Location: TBD

Contact: Lorna Forrest Hansen
lornahansen@comcast.net

Committee:

Alex Frick
Sharon Ladd Frick
Twillia Hamann Navara
Lorna Forrest Hansen
DyAnn Emery
Gordon Hamann
Tom Serie
Wilma Smidstra Jeffer
Nicky Wendt Stubbe

Class of '66

When: July 15 & 16, 2011

A Facebook page has been developed for classmates titled Luverne High School Class of 1966. If classmates are on Facebook, they are encouraged to join this group which currently has 24 members.

The 2011 Class Reunion Committee is comprised of the following classmates: Steve and Diane (VandeHoef) Thompson, Gary and Marsha (Haakenson) Gabrielson, Jennifer Holsen, Pam Holsen, Chuck and Cindy Rodman, Jim and Carol (Aanenson) Hatting, and Mary (Arp) and Leon Pick. Jennifer Holsen is the Reunion Committee contact and may be reached at jenholsen@gmail.com.

The Luverne *Alumni News* has class name and address records which the Committee has obtained and is updating it for future reunion communications. Contact Holsen with updated address and e-mail addresses so you won't miss out on future notifications regarding the 2011 Reunion. Lloyd Stanley is compiling a photo portfolio of classmate childhood homes and old landmarks for a trip down memory lane. If you remember your childhood home address, please e-mail it to Holsen as well. Your Reunion Committee is working hard to make the 2011 Reunion fun and memorable.

Hardwick All-School Reunion

When: June 24-25-26, 2011

The committee is compiling a database of Hardwick Grade School students. They ask that students email or mail your email and mailing address to: Patti Kirby Pierson, 1562 201st St., Hardwick, MN 56134 or send it electronically to piersonprp@frontiernet.net (Patti Kirby Pierson) or lorna@frontiernet.net (Lorna Siebenahler Bryan).

For more info, go to Facebook, the group is called "Hardwick Memories."

Alumni News Staff: Cindy Arends, Lori Ehde, Gregg Gropel, Rhonna Jarchow, Jane Wildung Lanphere,
Carol McDonald, Patti Kirby Piereson, and the Rock County Opportunities.

1304145

(Volume 21, Issue 2)

Alumni News
709 North Kniss Avenue
Luverne, MN 56156



Change Service Requested

Non-Profit
Organization
US Postage Paid
Luverne, MN
Permit No. 115

Place Label Here